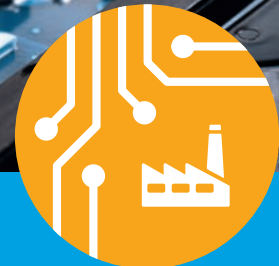
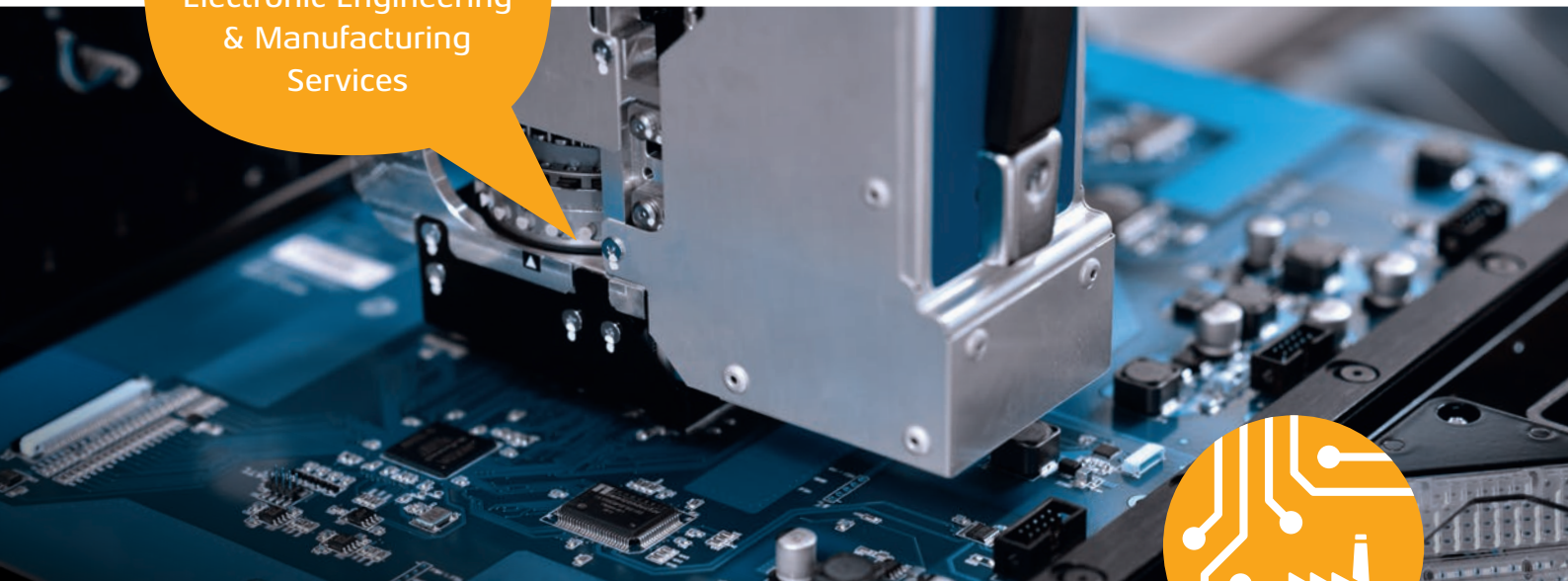


## EEMS

Electronic Engineering  
& Manufacturing  
Services



From the electronic assembly to the deliverable, packaged end device – our services for your commercial success.

Development  
and  
production



## COMPETENT AND COMMITTED FROM DEVELOPMENT TO PRODUCTION AND BEYOND

As your reliable partner, Grossenbacher Systeme supports you in all aspects of design, development, approval, production, lifecycle management and service.

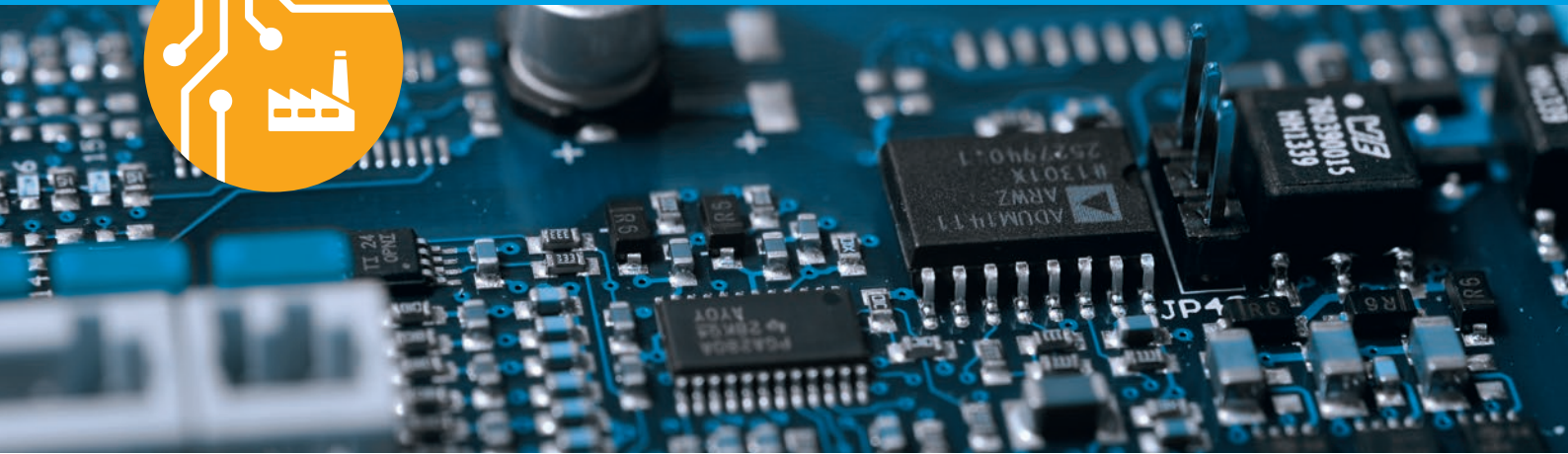
- Supplementary or complete development services
- Comprehensive, in-house test engineering
- Highly automated SMD production
- Efficient THT and end device assembly at three locations
- Testing and documentation services
- Logistic services and lifecycle management
- Services for repair/refurbishment and spare parts management



### MODERN, COMPETITIVE SOLUTIONS – SWISS STYLE INCLUDED

Our corporate policy is characterised by creativity, reliability and professionalism. We work with our clients, partners and employees in an authentic, open and straightforward manner. Mutual success is always our focus.

Your ideas and wishes form the basis of our work – get in touch with us!



## SOLUTION-FOCUSSED AND EFFICIENT

In the industrial sector, our developers support you with innovation, reliability and design to cost. We can draw on our numerous successful development projects for modules and circuit elements in many areas. The development teams at Grossenbacher Systeme and the Amalthea Group will devise creative and reliable solutions for you!

Choose the support you would like from us – you will receive practical and cost-oriented designs for your market success:

- Embedded developments from sensors/actuators to compact controllers
- Controller platforms with networking technologies (wired/wireless)
- Display systems, measurement electronics and power electronics
- Implementation of application software, tailoring of operating systems
- Mechanical design and integration of electronics

## PROFESSIONAL SUPPLY CHAIN MANAGEMENT

In order to ensure the long-term availability of the components used, the development team and SCM work closely together in our design process. But even if you only rely on our production and carry out the development yourself, we will take care of material management for you over the entire lifecycle:

- Worldwide purchasing of components, PCBs and drawing parts
- Comprehensive subcontractor management, in particular, drawing parts suppliers
- Obsolescence management (Last Time Buy, warehousing)
- Component consulting in case of redesigns
- Custom logistics solutions

Perfect control technology for climatic chambers – innovatively and reliably designed



Whether specifications, concepts or ideas, our specialists think with you and focus on your success.



We understand your processes and markets – the best conditions for efficient and successful cooperation!

EEMS

Services for your electronics

## RELIABILITY IN PRODUCTION AND SERVICE

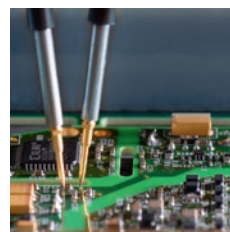


For decades, Grossenbacher Systeme has been manufacturing sophisticated industrial products for renowned companies. We are your competent and experienced partner from the assembly to the ready-to-deliver device.

We develop **the optimal test strategy** for your requirements. With automatic optical inspection (AOI), electrical component testing (ICT) including boundary scan and extensive functional tests, our experienced team of test engineers is at your disposal.

We create **individual production islands** for the production of your devices, which are designed for changing requirements and integrated test facilities. We select the degree of automation appropriate to the product depending on the quantity configuration.

Thanks to **three production sites in Europe**, we can deliver assemblies and complete end devices directly to your central distribution facility anywhere in the world. Of course, the associated service is also part of our service portfolio.



### A DEMANDING AREA FOR STANDARDS

Our comprehensive development and production certificates according to ISO 9001 and ISO 13485 are only one part of our QM and risk management system. You can rely on compliance with the following norms and standards:

- ISO 9001, ISO 13485
- IPC-A-610 D, J-STD
- Related, product-specific standards
- CE, UL, CCC

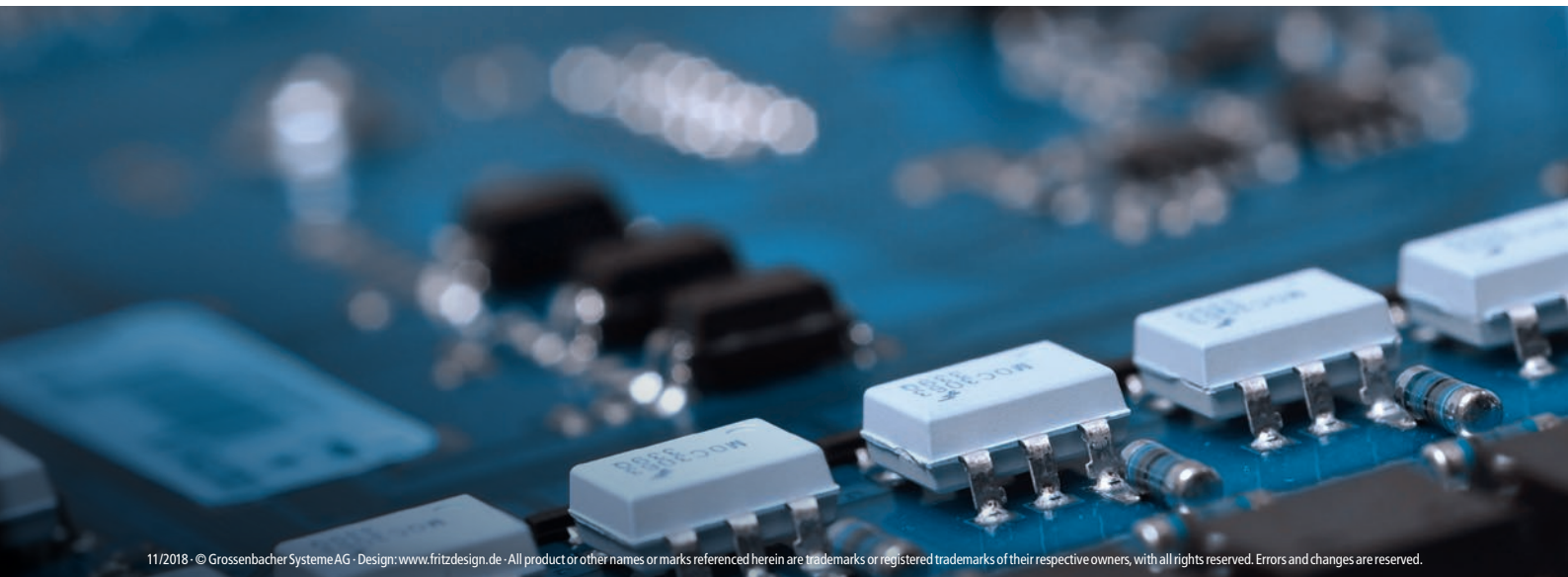
Development – production – service: where and when would you like to start?

Member of  
Amalthea Group



Grossenbacher Systeme AG  
Spinnereistrasse 10  
CH-9008 St. Gallen  
T +41 71 243 29 29

⋮  
Grossenbacher Systeme GmbH  
Feldwiesenstrasse 8  
D-79807 Lottstetten  
T +49 7745 928 69 71



11/2018 · © Grossenbacher Systeme AG · Design: [www.fritzdesign.de](http://www.fritzdesign.de) · All product or other names or marks referenced herein are trademarks or registered trademarks of their respective owners, with all rights reserved. Errors and changes are reserved.