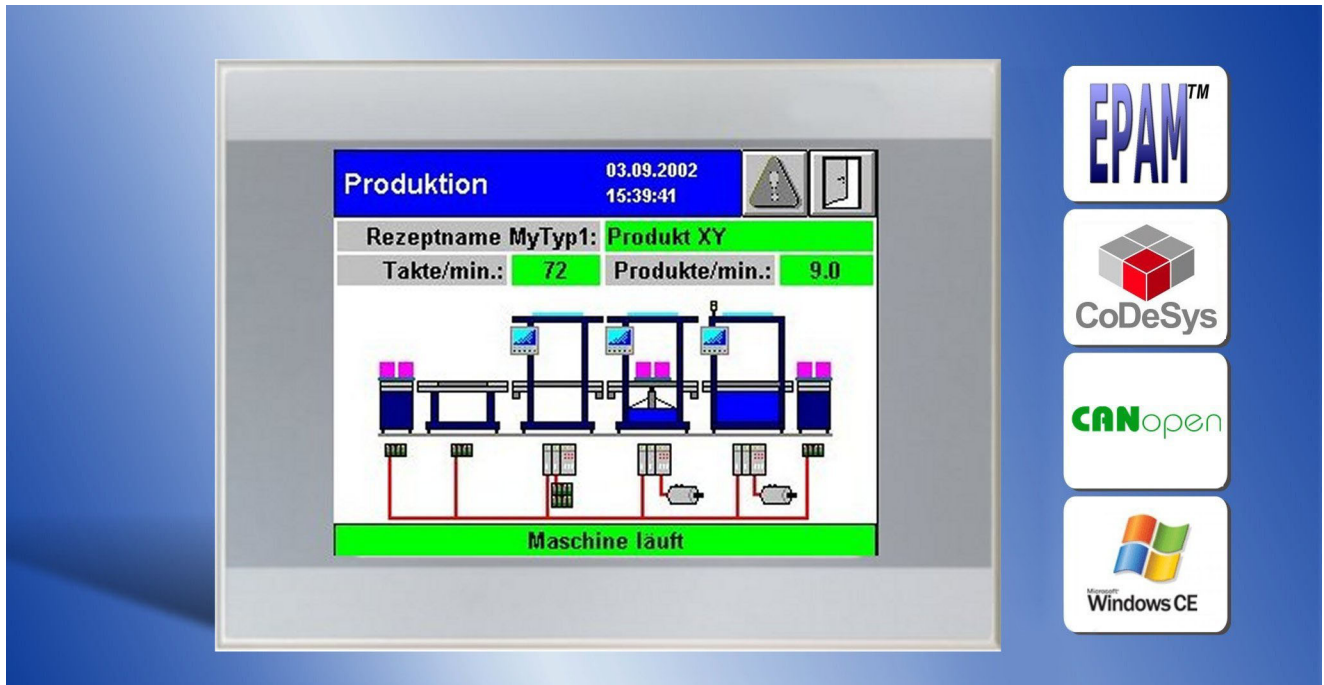


SP-240 3.5" bis 7"



- 3,5", 4,3", 5,7" or 7" TFT
- One mounting cutout for all sizes
- Resistive Touch-screen
- Powerful 400MHz ARM CPU
- WindowsCE or Linux
- Fanless
- Ethernet onboard
- Exchangeable MicroSD-Card
- CANopen
- CoDeSys Soft-PLC (Option)

The new **SmartPanels** enhances the **openAutomation** concept of Grossenbacher System AG in the range of small and medium applications. So price and performance can be optimized to the requirements of the application.

Based on a powerful 400MHz ARM processor with WindowsCE or Linux, 3,5", 4,3", 5,7" or 7" TFT display with LED backlight and touch screen, Ethernet, USB-Host and CAN on-board, the devices perfectly fits together with the openAutomation software solutions of Grossenbacher Systeme AG.

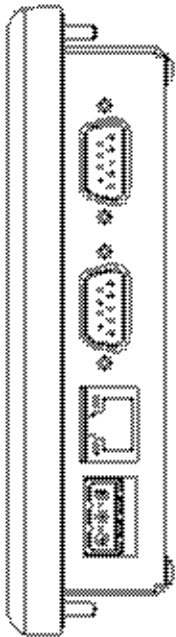
In the basic configuration the device can be used as „HMI“ or as a user programmable „HMI-Open“ with Ethernet, USB and CAN onboard.

With **CoDeSys** IEC-61131 Soft-PLC the device can be used as "HMI-Control" with Codesys including integrated **TargetVisu** and **WebVisu**.

Without moving parts the devices are "at home" in rugged environment!

The seamless resistive touch-screen provides a fast, intuitive and ergonomic operation.

Unique is the mechanical concept with one equal mounting cutout for all devices! So it is possible to change the display size at any time very easy without mechanical changes!



Technical data

System	
Processor	400MHz ARM
Memory	64MB SDRAM
Data-/Program memory	128MB Onboard-Flash Exchangable micro SD-Card (optional)
Retaindata	128kB retain memory ¹
Display	
Display area: Resolution	3,5": 320x240 QVGA 4,3": 480x272 WQVGA 5,7": 640x480 VGA 7": 800x480 WVGA
Type / Number of colours	Colour-TFT with 64k (16Bit)
Backlight	LED
Touch	
Type	4-wire, analog resistive
Interfaces	
Ethernet	1 x 10/100MBit
Serial	1 x COM1 RS232/485/422
USB	1 x USB-Master 2.0
CAN	1 x CANopen not isolated
Operating system	
WindowsCE	6.0
Linux	2.6 (SDK)
Power supply	
Rated voltage	24VDC, typ. 4-6W
Voltage range	8,5...30,2VDC
General Data	
Operating climate	0..60°C 10...90% rel. air humidity, non-condensing
Storage climate	-20...70°C 10...90% rel. air humidity, non-condensing
Standards	CE
Degree of protection	IP65 front, IP20 rear
EMC class	EN61000-6-2, EN61000-6-3
Mounting form	installation housing
Dimensions	
Front (W x H x D)	3,5"/4,3": 142 x 107 x 36(25 ²)mm 5,7"/7,5": 200 x 142 x 38(27 ²)mm
Cutout (W x H)	125 x 90 ³ mm (hole size 129x94 Ø4mm)
Ordering information	
SP-240-03R-000	5081862
SP-240-04R-000	5081863
SP-240-05R-000	5081864
SP-240-07R-000	5081865
Software	
RTS HMI CEARM SPi25	5055014
RTS HMI-Control CEARM SPi25 3S	5055015

¹ Backup at Power Fail

² Installation depth

³ Details s.a. manual

